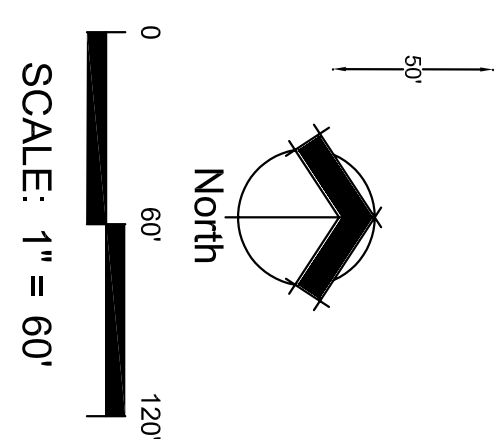
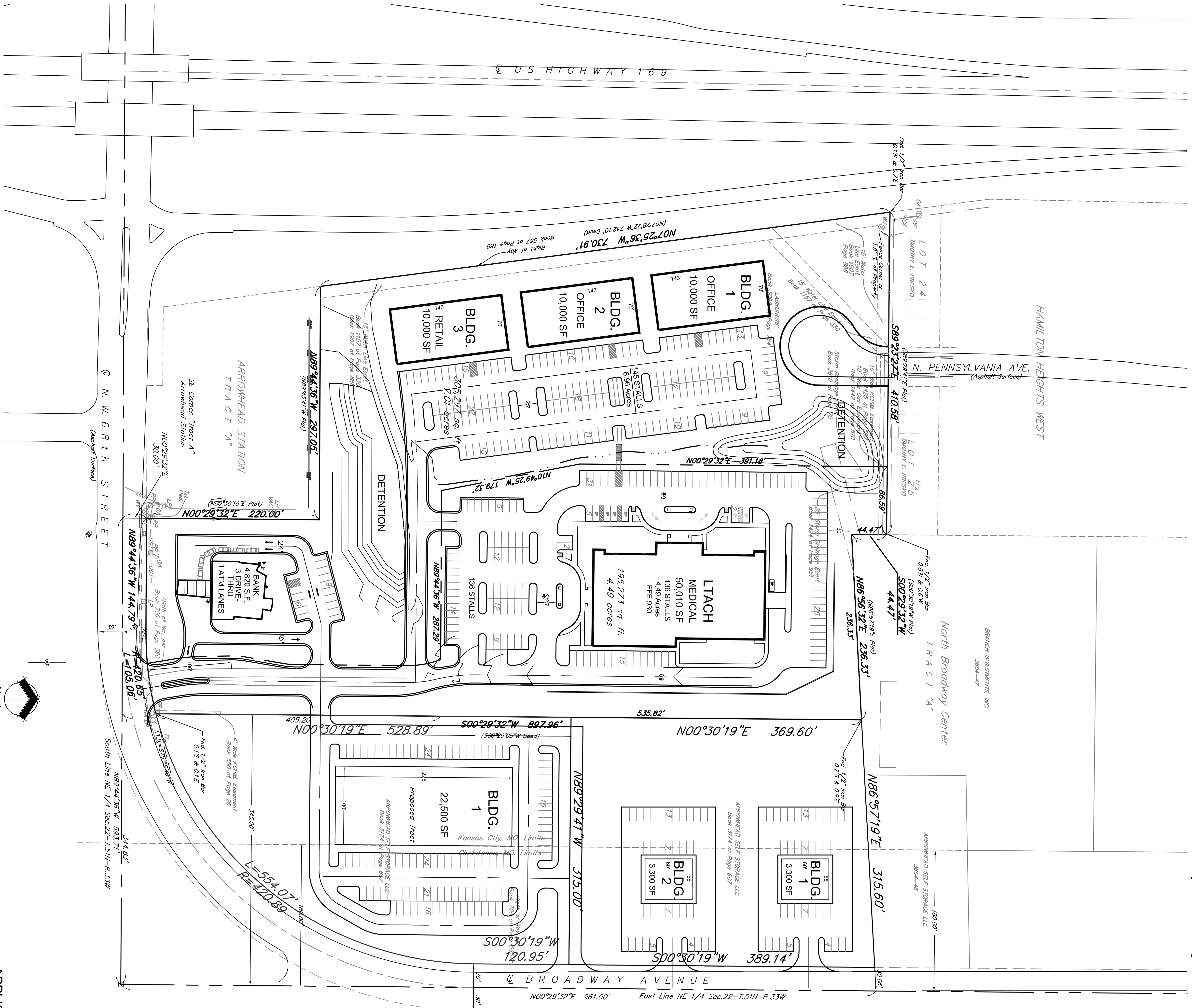
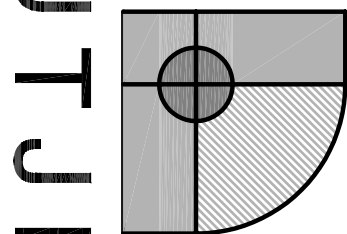


# PLAN AMENDMENT OAK HILL PLAZA PRELIMINARY PLAN

DISTRICT CP-1  
Sec. 1, Twp. 51, Rg. 34  
Platte County, Kansas City, Missouri



# CONCEPT 3

 <p><b>LUTJEN</b> surveying planning engineering landscape architecture</p>		<p>Lutjen, Inc. 8390 N. Spurr Clair Ave. Kansas City, MO 64115 816.587.4320 816.587.1393 fax www.lutjen.com</p>
<p>Submitted to City Planning Commission Approved by Planning Commission Revised per Planning Commission Revised per Planning Commission</p>	<p>Case/CDL No. 1916-CP-1</p>	<p>Date 07-26-06</p>
<p>APPLICANT Shane Danner, CO Trustee SDCL Trust P.O. Box 9203 Riverside, MO 64168</p>	<p>DATE: 07-21-06      Job No.: 06143      File Name: 06067MS.DWG</p>	